



# 2008 Line-up



**polk**audio  
the speaker specialists®

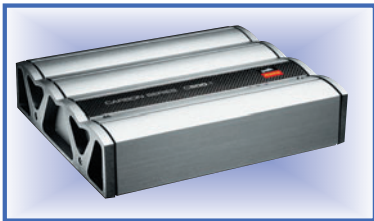


- Momo amplifiers
- SR loudspeakers
- SR subwoofers
- Momo loudspeakers
- Momo subwoofers
- db loudspeakers
- db subwoofers
- Loudspeaker grills
- Accessories



## MOMO AMPLIFIERS

polkaudio



**C500.1**  
Class-D mono amplifier  
1x350W RMS, 1x500W @ 2 Ohm. Pre-EQ switch, Maximum Dynamic Headroom (MDH) power supply, gain remote, SSP protection, detachable panel.



**C300.2**  
2-channel amplifier 2x150W RMS, 2x220W @ 2 Ohm. Pre-EQ switch, Maximum Dynamic Headroom (MDH) power supply, gain remote option, SSP protection, detachable panel.



**C400.4**  
4-channel amplifier 4x75W RMS, 4x100W @ 2 Ohm. Pre-EQ switch, Maximum Dynamic Headroom (MDH) power supply, gain remote option, SSP protection, detachable panel.



**POLK REMOTE**  
Remote control for Polk Momo amplifiers. Potentiometer for level adjustment.

## SR LOUDSPEAKERS

polkaudio



**SR5250**  
130mm 'compaxial' system. 22mm ring radiator tweeter, coaxial or separate. Removable phase-plug, polypropylene aerated honeycomb cone, butyl rubber surround, neodymium magnet.



**SR6500**  
165mm 'compaxial' system. 22mm ring radiator tweeter, coaxial or separate. Removable phase-plug, polypropylene aerated honeycomb cone, butyl rubber surround, neodymium magnet.

- Unique concept: compo and coaxial loudspeaker in one single system. Easy change from coaxial to compo system by replacing the tweeter from the center of the woofer cone by the phase-plug.
- Super high-grade crossover construction with pure quality high-end components, Zobel-network, tweeter protection and tweeter level (4 positions).
- Ring radiator technologie for an extremely accurate and detailed high-frequency reproduction, only to be found in the most expensive home audio systems.
- Swiveling coaxial tweeter (15°).



## SR SUBWOOFERS

polkaudio



**SR104-SVC**  
10" subwoofer, 550W RMS, 1100W max, 4Ω. ABS cone, NBR rubber surround, aluminum cast basket, dual spider, special voice coil ventilation.



**SR124-SVC**  
12" subwoofer, 600W RMS, 1200W max, 4Ω. ABS cone, NBR rubber surround, aluminum cast basket, dual spider, special voice coil ventilation.



**SR104-DVC**  
10" subwoofer, 550W RMS, 1100W max. 4+4Ω dual voice coil. ABS cone, NBR rubber surround, aluminum cast basket, dual spider, special voice coil ventilation.



**SR124-DVC**  
12" subwoofer, 600W RMS, 1200W max. 4+4Ω dual voice coil. ABS cone, NBR rubber surround, aluminum cast basket, dual spider, special voice coil ventilation.

## MOMO LOUDSPEAKERS

polkaudio



**MMC5250**  
130mm compo system, 100W RMS. Woven carbon-fiber cone, molded aluminum basket, silk/polymer 25mm swivel tweeter, external 2nd order X-over with tweeter attenuation, ABS Momo grille.



**MMC6500**  
165mm compo system, 125W RMS. Woven carbon-fiber cone, molded aluminum basket, silk/polymer 25mm swivel tweeter, external 2nd order X-over with tweeter attenuation, ABS Momo grille.



**MMC460**  
4x6" 2-way plate-speaker. Polypropylene Dynamic Balance cone, silk/ polymer 19mm tweeter, external crossover, injection molded ABS frame. 50W RMS power handling.



**MMC525**  
130mm 2-way coaxial. Woven carbonfiber Dynamic Balance cone, silk/polymer 25mm rotating tweeter, external 2nd order X-over, molded aluminum basket, ABS Momo grille. 70W RMS power handling.



**MMC650**  
165mm 2-way coaxial. Woven carbonfiber DB cone, silk/polymer 25mm swivel tweeter, external 2nd order X-over, molded aluminum basket, ABS Momo grille. 80W RMS power handling.



**MMC570**  
5x7" 2-way coaxial. Woven carbonfiber DB cone, silk/polymer 25mm rotating tweeter, external 2nd order X-over, molded aluminum basket. 70W RMS power handling.



**MMC690**  
6x9" 3-way coaxial. Carbon-fiber DB cone, 31mm mid-range, silk/polymer 25mm swivel tweeter, external 2nd order X-over, molded aluminum basket, ABS Momo grille. 100W RMS power handling.



**MM2084**  
8" (20cm) subwoofer 400W max power handling, 4 Ohm. Metalized polypropylene concave full-cone, rubber surround, stamped steel basket. Fits in 9,9 liter sealed enclosure.



**MM2104**  
10" (25cm) subwoofer 600W max power handling, 4 Ohm. Metalized polypropylene concave full-cone, rubber surround, stamped steel basket. Fits in 18,7 liter sealed enclosure.



**MM2124**  
12" (30cm) subwoofer 800W max power handling, 4 Ohm. Metalized polypropylene concave full-cone, rubber surround, stamped steel basket. Fits in 24,9 liter sealed enclosure.



**MM2154**  
15" (38cm) subwoofer 800W max power handling, 4 Ohm. Metalized polypropylene concave full-cone, rubber surround, stamped steel basket. Fits in 42,5 liter sealed enclosure.



**MM2084-DVC**  
8" (20cm) dual voice coil subwoofer 2x4 Ohm, 400W max. Metalized polypropylene concave full-cone, rubber surround, stamped steel basket. Fits in 9,9 liter sealed enclosure.



**MM2104-DVC**  
10" (25cm) dual voice coil subwoofer 2x4 Ohm, 600W max. Metalized polypropylene concave full-cone, rubber surround, stamped steel basket. Fits in 18,7 liter sealed enclosure.



**MM2124-DVC**  
12" (30cm) dual voice coil subwoofer 2x4 Ohm, 800W max. Metalized polypropylene concave full-cone, rubber surround, stamped steel basket. Fits in 24,9 liter sealed enclosure.



**MM2154-DVC**  
15" (38cm) dual voice coil subwoofer 2x4 Ohm, 800W max. Metalized polypropylene concave full-cone, rubber surround, stamped steel basket. Fits in 42,5 liter sealed enclosure.



**db5251**  
130mm compo system. Dynamic Balance polymer/mica cone, rubber surround and db-grille. 25mm silk/polymer tweeter, Butterworth crossover with tweeter protection. Spray waterproof.



**db6501**  
160mm compo system with met Euro fitting rings. Polymer/mica cone, rubber surround, db-grille. 25mm silk/polymer tweeter, Butterworth crossover with tweeter protection. Spray waterproof.



**db351**  
87mm coaxial 2-way loudspeaker. Dynamic Balance polymer/mica cone, rubber surround. 19mm silk/polymer dometweeter, 2-way crossover, spray waterproof.



**db401**  
100mm coaxial 2-way speaker. Dynamic Balance polymer/mica cone and rubber surround. 19mm silk/polymer dometweeter, 2-way crossover, db-grille. Spray waterproof.



**db461**  
4x6" coaxial 2-way loudspeaker. Dynamic Balance polymer/mica cone, rubber surround. 19mm silk/polymer dometweeter, 2-way crossover, spray waterproof.



**db461p**  
4x6" 2-way platespeaker. Dynamic Balance polymer/mica cone, rubber surround. 19mm silk/polymer dometweeter, 2-way crossover, spray waterproof.



**db501**  
127mm coaxial 2-way speaker. Dynamic Balance polymer/mica cone, rubber surround. 19mm silk/polymer dometweeter, 2-way crossover, spray waterproof.



**db521**  
130mm coaxial 2-way speaker. Dynamic Balance polymer/mica cone, rubber surround. 19mm silk/polymer dometweeter, 2-way crossover, db-grille, spray waterproof.



**db651**  
160mm coaxial 2-way speaker with Euro fitting rings. Polymer/mica cone, rubber surround. 19mm silk/polymer dometweeter, 2-way crossover, db-grille, spray waterproof.



**db651s**  
160mm slimline 2-way coaxial with Euro fitting rings. Polymer/mica cone, rubber surround. 19mm silk/polymer dometweeter, 2-way crossover, db-grille, spray water, super flat design.



**db571**  
5x7" coaxial 2-way loudspeaker. Dynamic Balance polymer/mica cone, rubber surround. 19mm silk/polymer dometweeter, 2-way crossover, spray waterproof.



**db691**  
6x9" coaxial 3-way loudspeaker. Dynamic Balance polymer/mica cone, rubber surround. 25mm and 19mm silk/polymer domes, 2-way crossover, db-grille, spray waterproof.



**db1001**  
25mm liquid cooled tweeter with silk/polymer diaphragm and neodymium magnet. Flush and top mount with swivel option. Inline passive crossover with tweeter protection.



**DB SUBWOOFERS**



**db840**  
8" subwoofer, 180W RMS, 360W max. Polypropylene composite cone, ABS dust-cap and butyl rubber surround. Stamped steel basket with ventilated pole piece. For any kind of enclosure.



**db1040**  
10" subwoofer, 270W RMS, 540W max. Polypropylene composite cone, ABS dust-cap and butyl rubber surround. Stamped steel basket with ventilated pole piece. For any kind of enclosure.

## DB SUBWOOFERS

polkaudio



**db1240**  
12" subwoofer, 360W RMS, 720W max. Polypropylene composite cone, ABS dust cap and butyl rubber surround. Stamped steel basket with ventilated pole piece. For any kind of enclosure.



**db840DVC**  
8" dual voice coil subwoofer, 2x4 Ohm, 180W RMS. Polypropylene composite cone, ABS dustcap, rubber surround. Stamped steel basket, ventilated pole piece. For any kind of enclosure.



**db1040DVC**  
10" dual voice coil subwoofer, 2x4 Ohm, 270W RMS. Polypropylene composite cone, ABS dustcap, rubber surround. Stamped steel basket, ventilated pole piece. For any kind of enclosure.



**db1240DVC**  
12" dual voice coil subwoofer, 2x4 Ohm, 360W RMS. Polypropylene composite cone, ABS dustcap, rubber surround. Stamped steel basket, ventilated pole piece. For any kind of enclosure.



**db1212**  
Single bass reflex enclosure with a 12" db1240 subwoofers. 4 Ohm impedance, 720W max. Powerport, db-grilles, slanted backside, 18mm MDF, slightly curved ABS frontpanel.



**db1222**  
Double bass reflex enclosure with two 12" db1240 subwoofers. 2 Ohm impedance, 720W max. Powerport, db-grilles, slanted backside, 18mm MDF, slightly curved ABS frontpanel.

## LUIDSPEAKER GRILLES

polkaudio



**G6**  
Grille 6" for 165mm midwoofers. Momo styled according to the Quasar II Momo wheel rim. 8-spoke molded ABS plastic with Polk logo.



**G8**  
Grille 8" for MM2084 (DVC) and db804(DVC) subwoofers. Momo styled according to the Quasar II Momo wheel rim. 8-spoke molded ABS plastic with Polk logo.



**G10**  
Grille 10" for MM104, MM2104(DVC) and db104(DVC) subwoofers. Momo styled according to the Quasar II Momo wheel rim. 8-spoke molded ABS plastic with Polk logo.



**G12**  
Grille 12" for MM124, MM2124(DVC) and db124(DVC) subwoofers. Momo styled according to the Quasar II Momo wheel rim. 8-spoke molded ABS plastic with Polk logo.



**G15**  
Grille 15" for MM2154(DVC) subwoofer. Momo styled according to the Quasar II Momo wheel rim. 8-spoke molded ABS plastic with Polk logo.



## ACCESSORIES

polkaudio



**POLKPOLO**  
Polk Audio polo shirt. Fruit of the Loom quality shirt in sunflower-yellow colour, with Polk logo at the front side, sleeve and back side. Available in M, L and XL sizes.



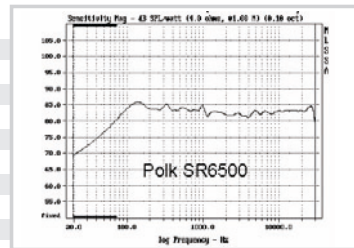
**POLKTATTOO**  
Polk Momo tattoo. Dimensions 5 x 2,5cm. Attaches to the skin with warm water. Washable.

# SPECIFICATIONS AMPLIFIERS

type	C500.1	C300.2	C400.4
<b>RMS power 4Ω</b>	1x350W	2x150W	4x75W
<b>power 2Ω</b>	1x500W	2x220W	4x100W
<b>bridged power 4Ω</b>	-	1x550W	2x200W
<b>S/N ratio</b>	>105dB	>105dB	>105dB
<b>frequency response</b>	<10 - 200Hz	10Hz - 45kHz	<10Hz - 45kHz
<b>input sensitivity</b>	0,2 - 8V	0,2 - 8V	0,2 - 8V
<b>gain remote control</b>	0 to -30dB	0 to -30dB	0 to -30dB
<b>subsonic filter</b>	15Hz -24dB/oct	15Hz -24dB/oct	15Hz -24dB/oct
<b>lowpass filter</b>	30-200Hz	50-250Hz	50Hz-5kHz
<b>slope</b>	12 of 24dB/oct	18dB/oct	12 or 24dB/oct
<b>highpass filter</b>	-	50-250Hz	50Hz-5kHz
<b>slope</b>	-	18dB/oct	12 or 24dB/oct
<b>dimensions</b>	279x248x64mm	330x248x64mm	394x248x64mm

# SPECIFICATIONS LOUDSPEAKERS

type	SR5250	SR6500
<b>system</b>	2-way compaxial	2-way compaxial
<b>diameter</b>	130mm	165mm Euro
<b>RMS power handling</b>	100W	125W
<b>max. power handling</b>	200W	250W
<b>frequency response</b>	60Hz-30kHz	40Hz-30kHz
<b>sensitivity</b>	90dB	90dB
<b>nominal impedance</b>	4Ω	4Ω
<b>mounting diameter</b>	110mm	142,9mm
<b>mounting depth</b>	57,1mm	64,9mm



type	MMC5250	MMC6500
<b>system</b>	2-way compo	2-way compo
<b>diameter</b>	130mm	165mm
<b>RMS power handling</b>	100 W	125 W
<b>max. power handling</b>	200 W	250 W
<b>frequency response</b>	53Hz-25kHz	43Hz-25kHz
<b>sensitivity</b>	89dB	90dB
<b>nominal impedance</b>	4Ω	4Ω
<b>mounting diameter</b>	119mm	127mm
<b>mounting depth</b>	69,9mm	71,4mm

type	MMC460	MMC525	MMC650	MMC570	MMC690
<b>system</b>	2-way coax	2-way coax	2-way coax	2-way coax	3-way coax
<b>diameter</b>	4x6"	130mm	165mm	5x7"	6x9"
<b>RMS power handling</b>	40 W	45 W	60 W	80 W	100 W
<b>max. power handling</b>	120 W	135 W	180 W	180 W	300 W
<b>frequency response</b>	75Hz-22kHz	60Hz-22kHz	40Hz-22kHz	40Hz-25kHz	33Hz-25kHz
<b>sensitivity</b>	91dB	93dB	92dB	90dB	91dB
<b>nominal impedance</b>	4Ω	4Ω	4Ω	4Ω	4Ω
<b>mounting diameter</b>	152,4x101,6mm	119mm	127mm	181x121mm	219,1x142,9mm
<b>mounting depth</b>	50,8mm	51,9mm	58,7mm	66,7mm	95,3mm

type	db5251	db6501	db1001	db351	db401	db501
<b>system</b>	2-way compo	2-way compo	tweeter	2-way coax	2-way coax	2-way coax
<b>diameter</b>	130/25mm	160/25mm	25mm	87mm	100mm	127mm
<b>RMS power handling</b>	100 W	100 W	60 W	35 W	45 W	45 W
<b>max. power handling</b>	250 W	300 W	180 W	105 W	135 W	135 W
<b>frequency response</b>	53Hz-23kHz	35Hz-23kHz	4-23kHz	90Hz-22kHz	85Hz-22kHz	65Hz-22kHz
<b>sensitivity</b>	93dB	92dB	92dB	91dB	91dB	93dB
<b>nominal impedance</b>	4Ω	4Ω	4Ω	4Ω	4Ω	4Ω
<b>mounting diameter</b>	119mm	127mm	52,4mm	79,4mm	101,6mm	101,6
<b>mounting depth</b>	58,7mm	65,1mm	28,5mm	38,1mm	46mm	46mm

type	db461	db461p	db521	db571	db651s	db651	db691
<b>system</b>	2-way coax	2-way compo	2-way coax	2-way coax	2-way coax	2-way coax	3-way coax
<b>diameter</b>	4x6" ovaal	4x6" plate	130mm	5x7"	160mm slimline	160mm	6x9"
<b>RMS power handling</b>	40 W	40 W	45 W	60 W	55 W	60 W	100 W
<b>max. power handling</b>	120 W	120 W	135 W	180 W	165 W	180 W	300 W
<b>frequency response</b>	75Hz-22kHz	75Hz-22kHz	60Hz-22kHz	52Hz-22kHz	50Hz-22kHz	35Hz-22kHz	35Hz-22kHz
<b>sensitivity</b>	91dB	91dB	93dB	93dB	92dB	92dB	93dB
<b>nominal impedance</b>	4Ω	4Ω	4Ω	4Ω	4Ω	4Ω	4Ω
<b>mounting diameter</b>	152,4x101,6mm	152,4x101,6mm	119mm	181x125,4mm	127mm	127mm	215,9x146mm
<b>mounting depth</b>	49,2mm	46mm	58,7mm	55,6mm	50,8mm	50,8mm	81mm

type	SR104-SVC	SR124-SVC	SR104-DVC	SR124-DVC
diameter	10" (250mm)	12" (308mm)	10" (250mm)	12" (308mm)
RMS power handling	550W	600W	550 W	600 W
max. power handling	1100W	1200W	1100 W	1200 W
nominal impedance	4Ω	4Ω	2x4Ω	2x4Ω
frequency response	25-200Hz	20-200Hz	25-200Hz	20-200Hz
Fs (Hz)	-	-	-	-
Re	-	-	-	-
Le	-	-	-	-
Qms	-	-	-	-
Qes	-	-	-	-
Qts	-	-	-	-
Sd	-	-	-	-
Vas (Liter)	-	-	-	-
sensitivity (1w/1m)	90dB	89dB	90dB	89dB
Xmax mechanical	-	-	-	-
Xmax linear	-	-	-	-
mounting diameter	-	-	-	-
mounting depth	177,8mm	193mm	177,8mm	193mm

type	MM2084	MM2104	MM2124	MM2154	MM2084-DVC	MM2104-DVC	MM2124-DVC	MM2154-DVC
diameter	8"(200mm)	10" (250mm)	12" (308mm)	15" (380mm)	8"(200mm)	10" (250mm)	12" (308mm)	15" (380mm)
RMS power handling	175W	240W	350 W	350 W	200W	300W	400 W	400 W
max. power handling	400W	600W	800 W	800 W	400W	600W	800 W	800 W
nominal impedance	4Ω	4Ω	4Ω	4Ω	2x4Ω	2x4Ω	2x4Ω	2x4Ω
frequency response	26-200Hz	24-200Hz	23-200Hz	18-150Hz	26-200Hz	24-200Hz	23-200Hz	18-150Hz
Fs (Hz)	43,1Hz	35,2Hz	30,8Hz	23,7Hz	43Hz	38Hz	31Hz	24Hz
Re	3,3 Ohm	3,3 Ohm	3,3 Ohm	3,5 Ohm	3,25 Ohm/coil	3,25 Ohm/coil	3,25 Ohm/coil	3,25 Ohm/coil
Le	1,84mH	2,56mH	2,42mH	3,01mH	1,94mH	2,59mH	2,29mH	2,20mH
Qms	15,13	13,77	13,66	10,21	6,80	5,93	6,06	6,07
Qes	0,68	0,50	0,54	0,49	0,66	0,52	0,61	0,55
Qts	0,65	0,48	0,52	0,47	0,60	0,48	0,55	0,51
Sd	224cm <sup>2</sup>	353cm <sup>2</sup>	518,7cm <sup>2</sup>	814,3cm <sup>2</sup>	224cm <sup>2</sup>	353cm <sup>2</sup>	518,7cm <sup>2</sup>	814,3cm <sup>2</sup>
Vas (liter)	15,90l	30,67l	63,71l	186,75l	17,66l	25,1l	63,71l	186,75l
sensitivity (1w/1m)	85dB	86dB	88dB	90dB	85dB	86dB	88dB	90dB
Xmax mechanical	18mm	18mm	19mm	20mm	18mm	18mm	19mm	20mm
Xmax linear	8,25mm	9mm	9,5mm	9,5mm	7,5mm	9,5mm	9,5mm	9,5mm
mounting diameter	179,3mm	230,1mm	279,1mm	325,6mm	179,3mm	230,1mm	279,1mm	325,6mm
mounting depth	115,8mm	158,2mm	180,3mm	200,7mm	115,8mm	158,2mm	180,3mm	200,7mm

type	db840	db1040	db1240	db840DVC	db1040DVC	db1240DVC
diameter	8"(200mm)	10" (250mm)	12" (308mm)	8"(200mm)	10" (250mm)	12" (308mm)
RMS power handling	180W	270 W	360 W	180 W	270 W	360 W
max. power handling	360W	540 W	720 W	360 W	540 W	720 W
nominal impedance	4Ω	4Ω	4Ω	2x4Ω	2x4Ω	2x4Ω
frequency response	30-200Hz	28-200Hz	27-200Hz	30-200Hz	28-200Hz	27-200Hz
Fs (Hz)	42Hz	35Hz	30Hz	43Hz	35Hz	30Hz
Re	3,5 Ohm	3,5 Ohm	3,5 Ohm	3,4 Ohm/coil	3,4 Ohm/coil	3,4 Ohm/coil
Le	2,3mH	3,0mH	3,0mH	2,47mH	5,1mH	5,1mH
Qms	13,4	9,1	10,4	14,1	10,4	10,4
Qes	0,58	0,59	0,46	0,62	0,66	0,49
Qts	0,61	0,57	0,44	0,61	0,52	0,50
Sd	230cm <sup>2</sup>	350cm <sup>2</sup>	520cm <sup>2</sup>	230cm <sup>2</sup>	350cm <sup>2</sup>	520cm <sup>2</sup>
Vas (liter)	15,4l	28,3l	71,85l	15,8l	30,29l	67,9l
sensitivity (1W/1M)	85dB	86dB	88dB	85dB	86dB	88dB
Xmax linear	6,1mm	7,5mm	7,5mm	6,1mm	9mm	9mm
voice coil diameter	38,1mm	50,8mm	50,8mm	38,1mm	50,8mm	50,8mm
mounting diameter	179,4mm	230,2mm	279,4mm	179,4mm	230,2mm	279,4mm
mounting depth	115,8mm	158,2mm	171,4mm	115,8mm	158,2mm	171,4mm